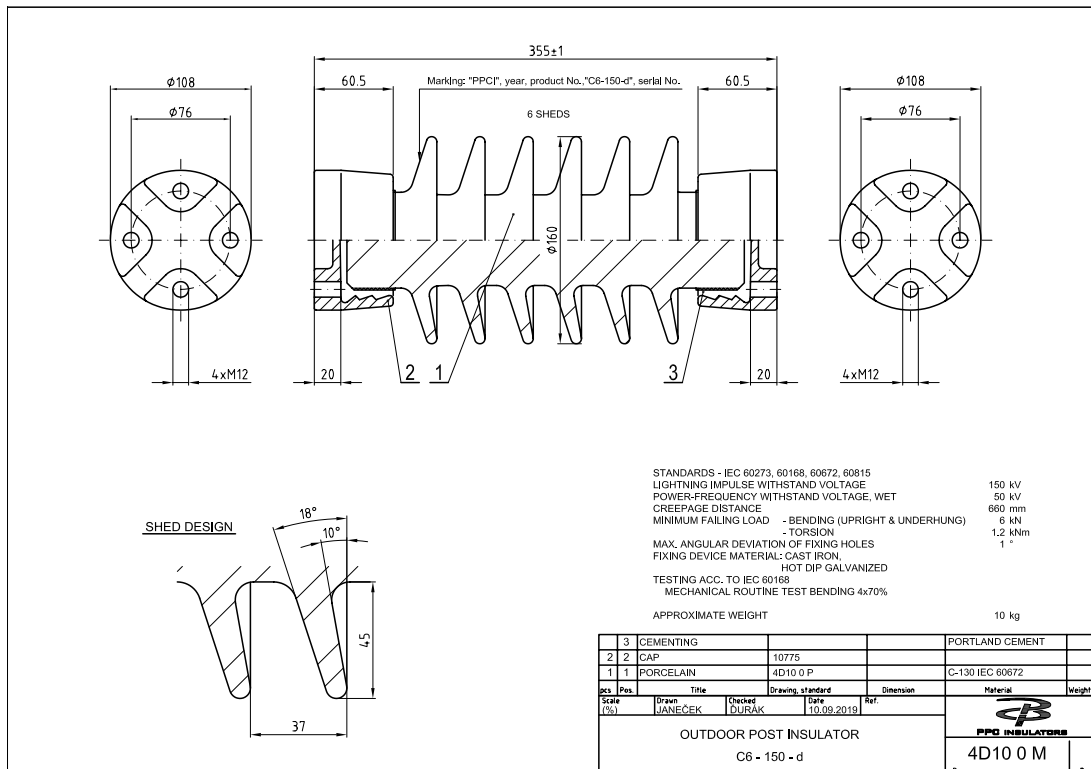


TYPE

BIL 150 kV

PPC Catalogue No.: 342 150 4D10 0814

Specification Description	Technical Particulars	Unit
Manufacturer's Name & Country	PPC	
Manufacturer's Type Designation	Products	
Drawing No.	4D10 0 M	
Mechanical strength	6	kN
BIL	150	kV
Minimum CD	660	mm
Top PCD	76	mm
Bottom PCD	76	mm
Glaze Color	brown	
No. of Units	1	
kV Level	26.4	kV
Core Diameter	70	mm
Max. Shed/Outer Diameter	160	mm
Porcelain Weight	6.5	kg
Assembled Weight	10	kg
Height	355	mm
Large Sheds	6	
Small Sheds	0	



TYPE

BIL 150 kV

PPC Catalogue No.: 342 150 4D11 0814

Specification Description	Technical Particulars	Unit
Manufacturer's Name & Country	PPC	
Manufacturer's Type Designation	Products	
Drawing No.	4D11 0 M	
Mechanical strength	10	kN
BIL	150	kV
Minimum CD	660	mm
Top PCD	76	mm
Bottom PCD	76	mm
Glaze Color	brown	
No. of Units	1	
kV Level	26.4	kV
Core Diameter	90	mm
Max. Shed/Outer Diameter	175	mm
Porcelain Weight	8	kg
Assembled Weight	12	kg
Height	355	mm
Large Sheds	4	
Small Sheds	3	

