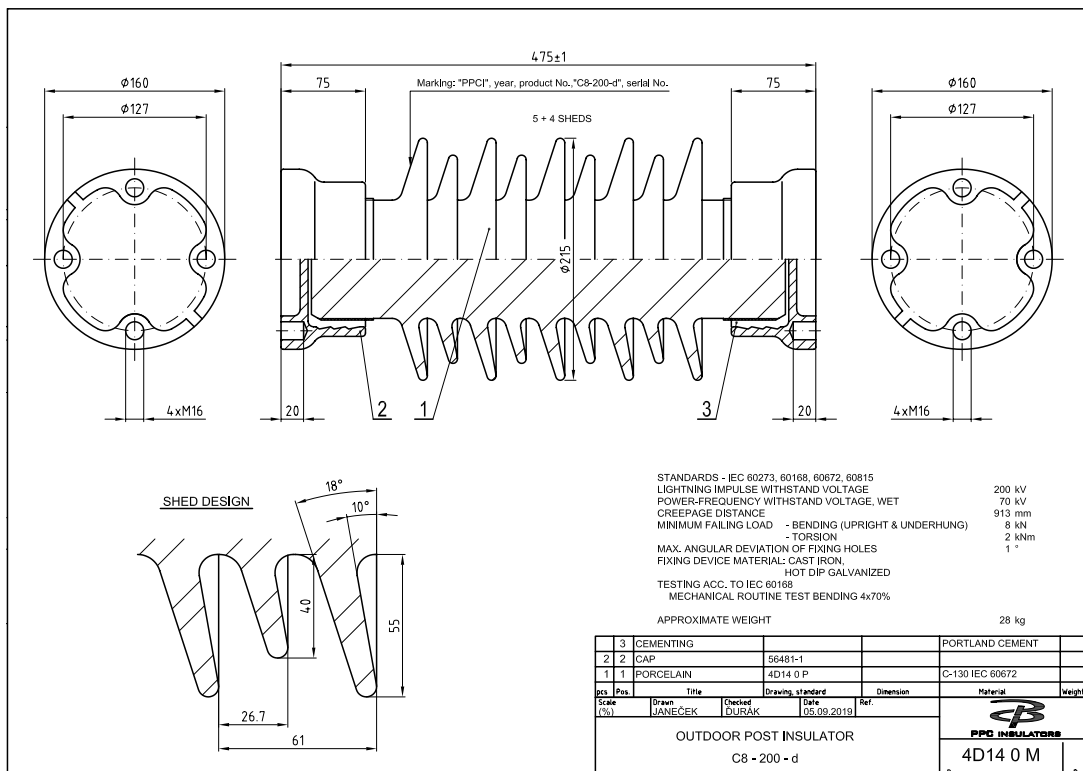


TYPE

# BIL 200 kV

PPC Catalogue No.: 342 150 4D14 0814

Specification Description	Technical Particulars	Unit
Manufacturer's Name & Country	PPC	
Manufacturer's Type Designation	Products	
Drawing No.	4D14 0 M	
Mechanical strength	8	kN
BIL	200	kV
Minimum CD	913	mm
Top PCD	127	mm
Bottom PCD	127	mm
Glaze Color	brown	
No. of Units	1	
kV Level	36	kV
Core Diameter	105	mm
Max. Shed/Outer Diameter	215	mm
Porcelain Weight	20	kg
Assembled Weight	28	kg
Height	475	mm
Large Sheds	5	
Small Sheds	4	



TYPE

# BIL 200 kV

PPC Catalogue No.: 342 150 4D15 0814

Specification Description	Technical Particulars	Unit
Manufacturer's Name & Country	PPC	
Manufacturer's Type Designation	Products	
Drawing No.	4D15 0 M	
Mechanical strength	12.5	kN
BIL	200	kV
Minimum CD	913	mm
Top PCD	127	mm
Bottom PCD	127	mm
Glaze Color	brown	
No. of Units	1	
kV Level	36	kV
Core Diameter	105	mm
Max. Shed/Outer Diameter	215	mm
Porcelain Weight	20	kg
Assembled Weight	28	kg
Height	475	mm
Large Sheds	5	
Small Sheds	4	

