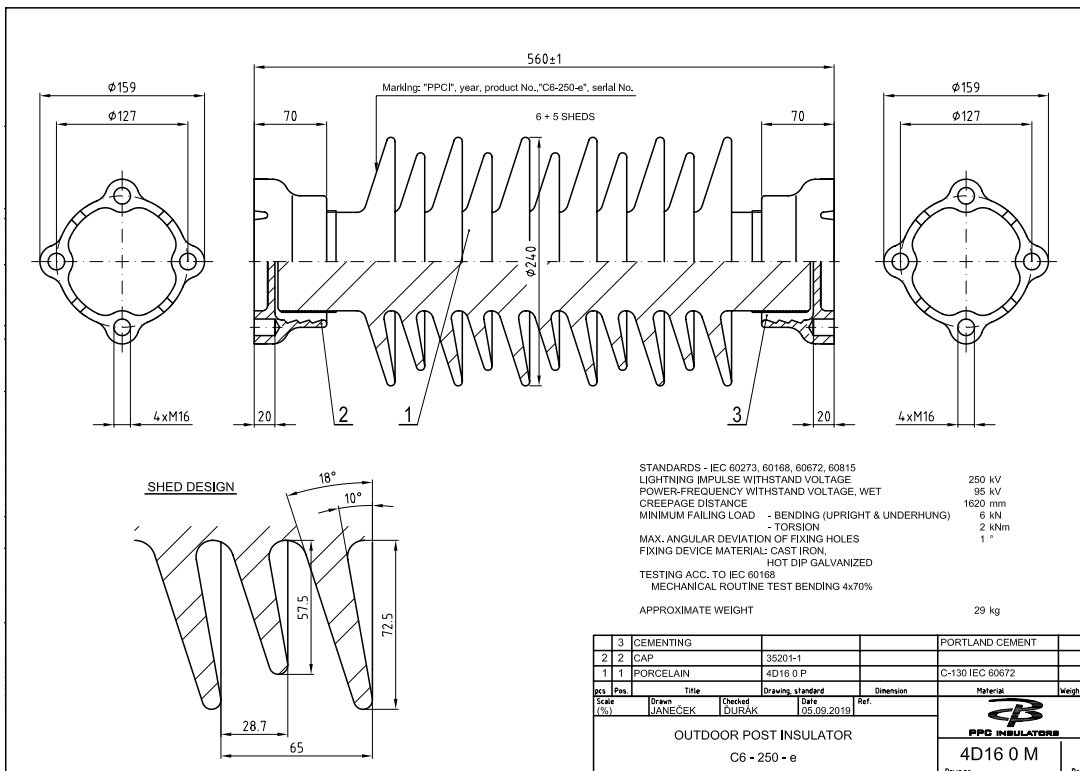


TYPE

BIL 250 kV

PPC Catalogue No.: 342 150 4D16 0814

Specification Description	Technical Particulars	Unit
Manufacturer's Name & Country	PPC	
Manufacturer's Type Designation	Products	
Drawing No.	4D16 0 M	
Mechanical strength	6	kN
BIL	250	kV
Minimum CD	1620	mm
Top PCD	127	mm
Bottom PCD	127	mm
Glaze Color	brown	
No. of Units	1	
kV Level	52	kV
Core Diameter	95	mm
Max. Shed/Outer Diameter	240	mm
Porcelain Weight	23.5	kg
Assembled Weight	29	kg
Height	560	mm
Large Sheds	6	
Small Sheds	5	



TYPE

BIL 250 kV

PPC Catalogue No.: 342 150 4D17 0814

Specification Description	Technical Particulars	Unit
Manufacturer's Name & Country	PPC	
Manufacturer's Type Designation	Products	
Drawing No.	4D17 0 M	
Mechanical strength	12.5	kN
BIL	250	kV
Minimum CD	1620	mm
Top PCD	127	mm
Bottom PCD	127	mm
Glaze Color	brown	
No. of Units	1	
kV Level	52	kV
Core Diameter	95	mm
Max. Shed/Outer Diameter	240	mm
Porcelain Weight	23.5	kg
Assembled Weight	29	kg
Height	560	mm
Large Sheds	6	
Small Sheds	5	

