

TYPE

BIL 60 kV

PPC Catalogue No.: 342 150 4D34 0814

Specification Description	Technical Particulars	Unit
Manufacturer's Name & Country	PPC	
Manufacturer's Type Designation	Products	
Drawing No.	4D34 0 M	
Mechanical strength	8	kN
BIL	60	kV
Minimum CD	190	mm
Top PCD	76	mm
Bottom PCD	76	mm
Glaze Color	brown	
No. of Units	1	
kV Level	7.2	kV
Core Diameter	65	mm
Max. Shed/Outer Diameter	185	mm
Porcelain Weight	2.2	kg
Assembled Weight	5	kg
Height	190	mm
Large Sheds	2	
Small Sheds	0	

4 TAPPED HOLES M12x1,75 ON 76 B.C. - DEEP 14

TOP

190 ±0.15

Ø185

Ø76

Ø100

PPC SANTANA

DIMENSIONAL CHARACTERISTICS

LEAKAGE DISTANCE MINIMUM	mm	190
DRY ARcing DISTANCE	mm	145

MECHANICAL CHARACTERISTICS

CANTILEVER STRENGTH	kN	8
TORSIONAL STRENGTH	kN.m	0,8

ELECTRICAL CHARACTERISTICS

LIGHTNING IMPULSE WITHSTAND VOLTAGE	kV	60
POWER FREQUENCY WITHSTAND (WET)	kV	20

PACKING CHARACTERISTICS

UNIT NET WEIGHT	kg	5
-----------------	----	---

BOTTOM

4 TAPPED HOLES M12x1,75 ON 76 B.C. - DEEP 14

Ø76

Ø100

NOTES -

- 1- TOLERANCES ACCORDING TO IEC 60168
- 2- NUMBER OF SHEDS : 2
- 3- ALL FERROUS PARTS ARE HOT DIP GALV. PER ASTM A-153
- 4- DIMENSIONS IN MILLIMETERS
- 5- COLOUR: BROWN OR GRAY
- 6- PORCELAIN MATERIAL: ACCORDING TO IEC 60672-3 CLASS C-110

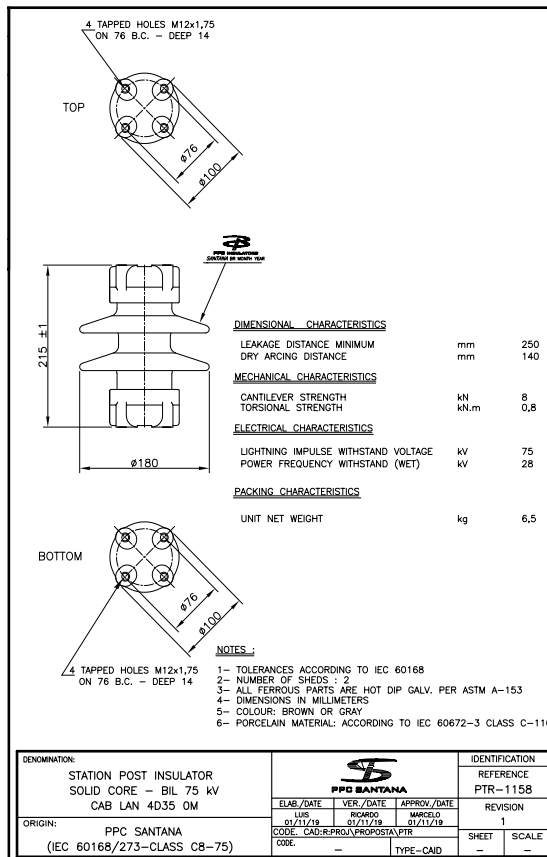
DENOMINATION:		PPC SANTANA		IDENTIFICATION	
STATION POST INSULATOR				REFERENCE	
SOLID CORE - BIL 60 kV				PTR-1157	
CAB LAN 4D34 0M				REVISION	
ORIGIN:	PPC SANTANA	ELAB./DATE	VER./DATE	APPROV./DATE	1
(IEC 60168/273-CLASS C8-60)		LUIS 31/03/19	RICARDO 31/03/19	MARCELO 31/03/19	
		CODE	CAD:R-PROVA-PROPOSTA-PTB		SHEET
		CODE	-	TYPE-CAID	SCALE
					-

TYPE

BIL 75 kV

PPC Catalogue No.: 342 150 4D35 0814

Specification Description	Technical Particulars	Unit
Manufacturer's Name & Country	PPC	
Manufacturer's Type Designation	Products	
Drawing No.	4D35 0 M	
Mechanical strength	8	kN
BIL	75	kV
Minimum CD	250	mm
Top PCD	76	mm
Bottom PCD	76	mm
Glaze Color	brown	
No. of Units	1	
kV Level	12	kV
Core Diameter	70	mm
Max. Shed/Outer Diameter	180	mm
Porcelain Weight	4	kg
Assembled Weight	6.5	kg
Height	215	mm
Large Sheds	2	
Small Sheds	0	



TYPE

BIL 95 kV

PPC Catalogue No.: 342 150 4D36 0814

Specification Description	Technical Particulars	Unit
Manufacturer's Name & Country	PPC	
Manufacturer's Type Designation	Products	
Drawing No.	4D36 0 M	
Mechanical strength	12.5	kN
BIL	95	kV
Minimum CD	380	mm
Top PCD	76	mm
Bottom PCD	76	mm
Glaze Color	brown	
No. of Units	1	
kV Level	17.5	kV
Core Diameter	87	mm
Max. Shed/Outer Diameter	192	mm
Porcelain Weight	6	kg
Assembled Weight	9.5	kg
Height	255	mm
Large Sheds	2	
Small Sheds	1	

4 TAPPED HOLES M12x1,75 ON 76 B.C. - DEEP 16

TOP

ø11.3

ø76

DIMENSIONAL CHARACTERISTICS

LEAKAGE DISTANCE NOMINAL	mm	380
DRY ARCING DISTANCE	mm	170

MECHANICAL CHARACTERISTICS

CANTILEVER STRENGTH	kN	12,5
TORSIONAL STRENGTH	kN.m	1,8

ELECTRICAL CHARACTERISTICS

POWER FREQUENCY WITHSTAND (WET)	kV	38
SWITCHING IMPULSE WITHSTAND (WET)	kV	-
LIGHTNING IMPULSE WITHSTAND VOLTAGE	kV	95

PACKING CHARACTERISTICS

UNIT NET WEIGHT	kg	9,5
-----------------	----	-----

255 ± 1

ø202

BOTTOM

ø11.3

ø76

4 TAPPED HOLES M12x1,75 ON 76 B.C. - DEEP 16

NOTES :

- 1- TOLERANCES ACCORDING TO IEC 60168
- 2- NUMBER OF SHEDS : 3
- 3- ALL FERROUS PARTS ARE HOT DIP GALV. PER ASTM A-153
- 4- DIMENSIONS IN MILLIMETERS
- 5- COLOUR: BROWN OR GRAY
- 6- PORCELAIN MATERIAL: ACCORDING TO IEC 60672-3 CLASS C-110

DENOMINATION:		PPC SANTANA		IDENTIFICATION	
STATION POST INSULATOR SOLID CORE - 95 kV (BIL) CAB LAN 4D36 0M				REFERENCE PTR-451	
ORIGIN:				REVISION	
SANTANA DESIGN (IEC 60273/168-CLASS C12,5-95)				3	
				SHEET	
				SCALE	
				-	
				-	